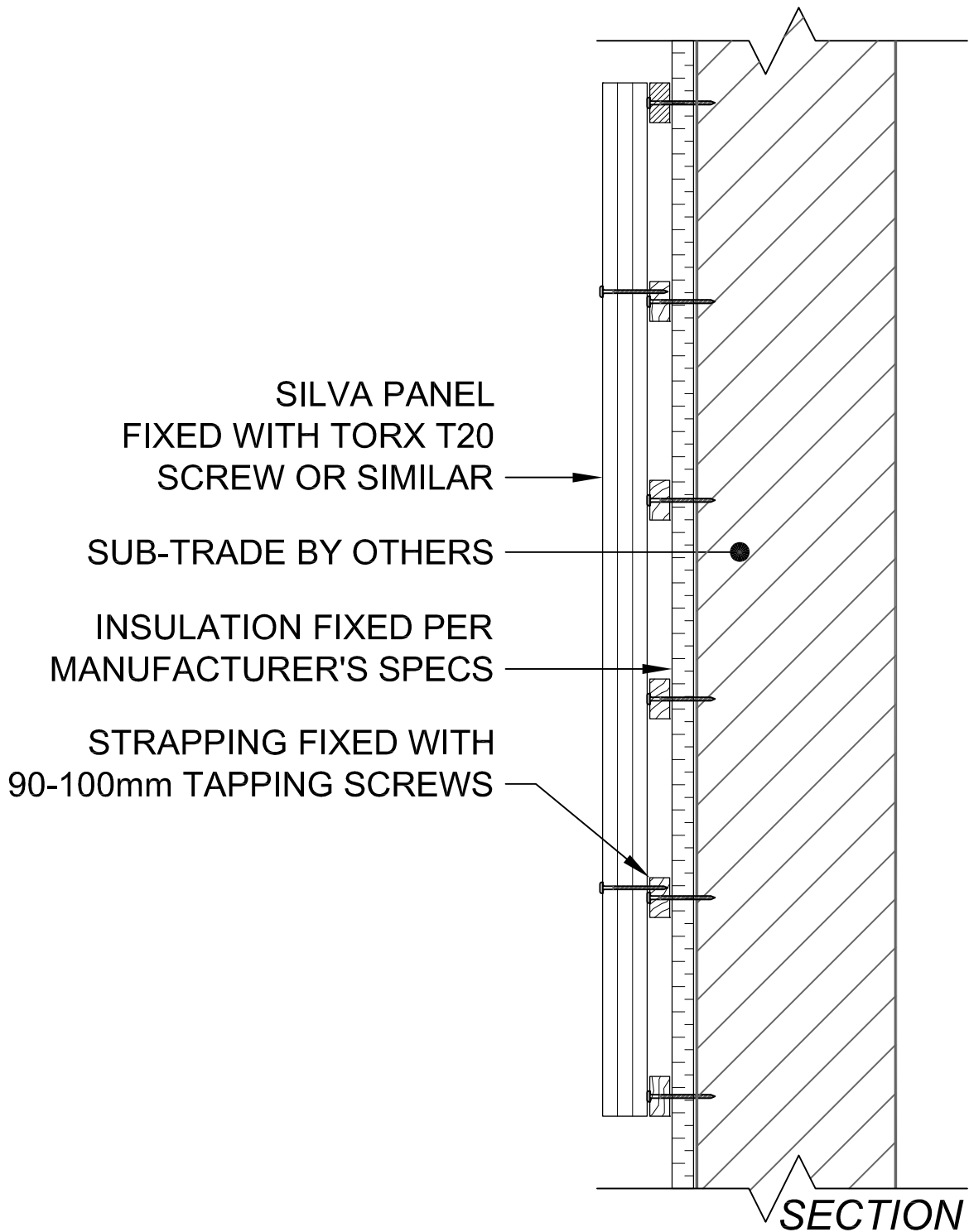


SILVA PANEL
TYPICAL CORNER DETAIL

SILVA PANEL
 202 - 1730 Coast Meridian Road,
 Port Coquitlam BC V3C 3T8, Canada
 T: 604.474.1730 F: 604.474.1731



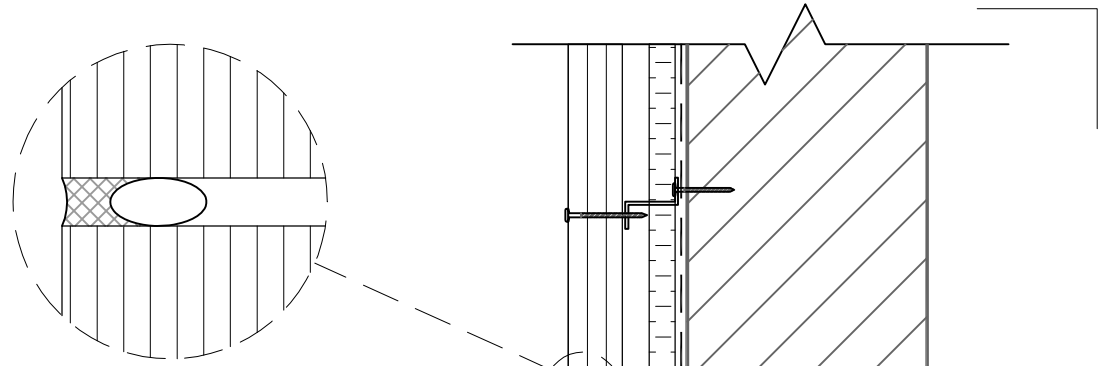
www.silvapanel.com



SILVA PANEL
TYPICAL APPLICATION DETAIL WITH STRAPPING

SILVA PANEL
202 - 1730 Coast Meridian Road,
Port Coquitlam BC V3C 3T8, Canada
T: 604.474.1730 F: 604.474.1731


www.silvapanel.com



3-5mm GAP WITH ROD & CAULK
FOR CLOSED JOINT FINISH

3 PLY SILVA PANEL
FIXED WITH TORX T20
SCREW OR SIMILAR

SUB-TRADE BY OTHERS

Z GIRDS
FIXED WITH SCREWS

AIR SPACE

RIGID INSULATION

VAPOUR BARRIER

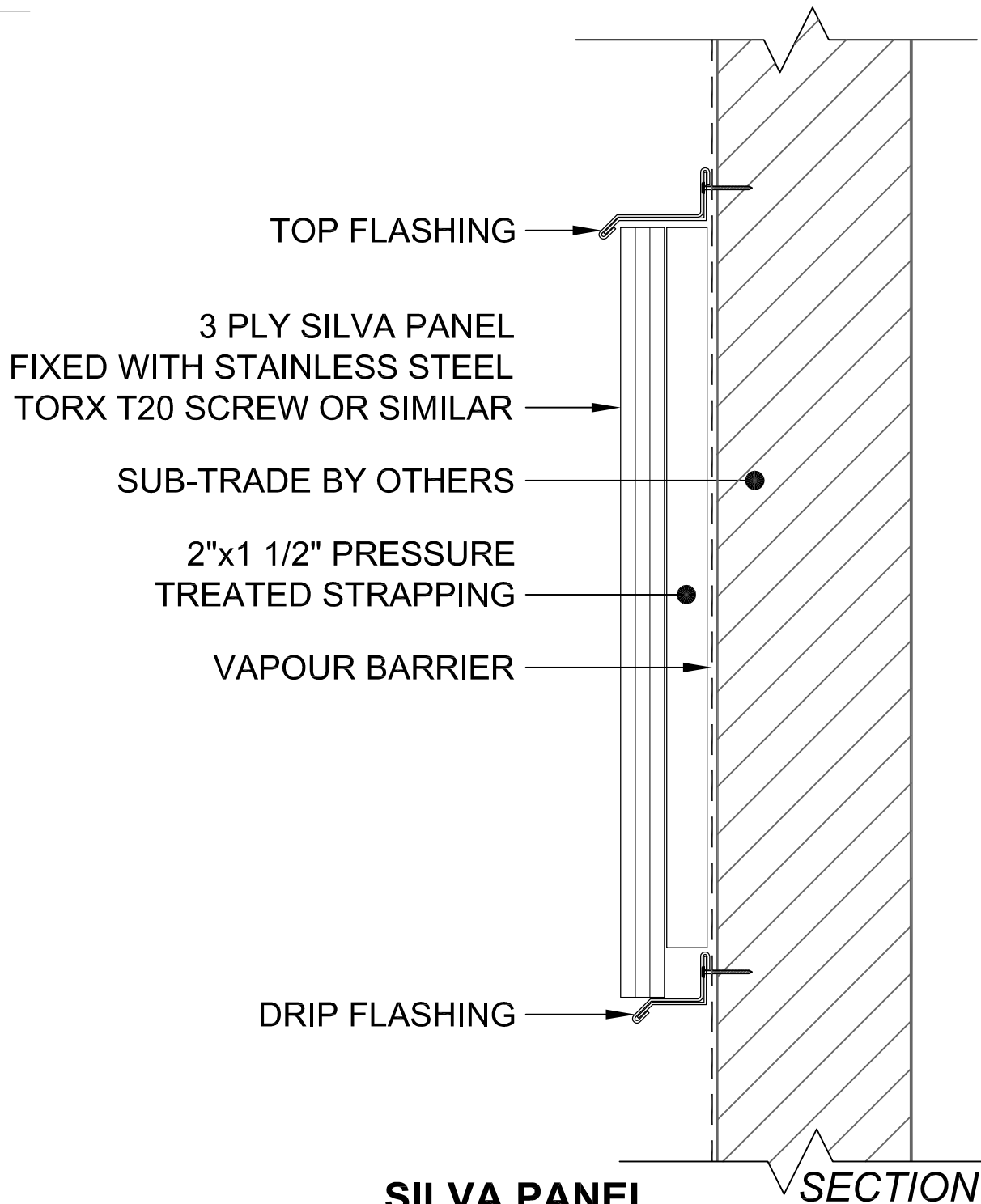
DRIP FLASHING

SECTION

SILVA PANEL
TYPICAL APPLICATION DETAIL ON Z GIRDS
WITH RIGID INSULATION & SEAMLESS SURFACE

SILVA PANEL
202 - 1730 Coast Meridian Road,
Port Coquitlam BC V3C 3T8, Canada
T: 604.474.1730 F: 604.474.1731


www.silvapanel.com

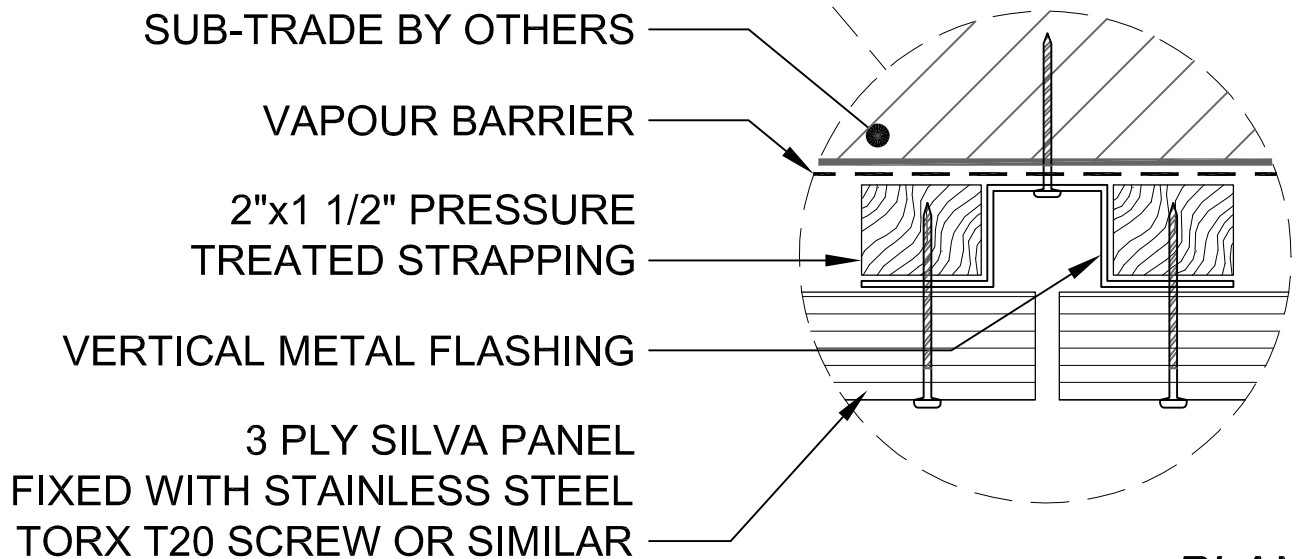
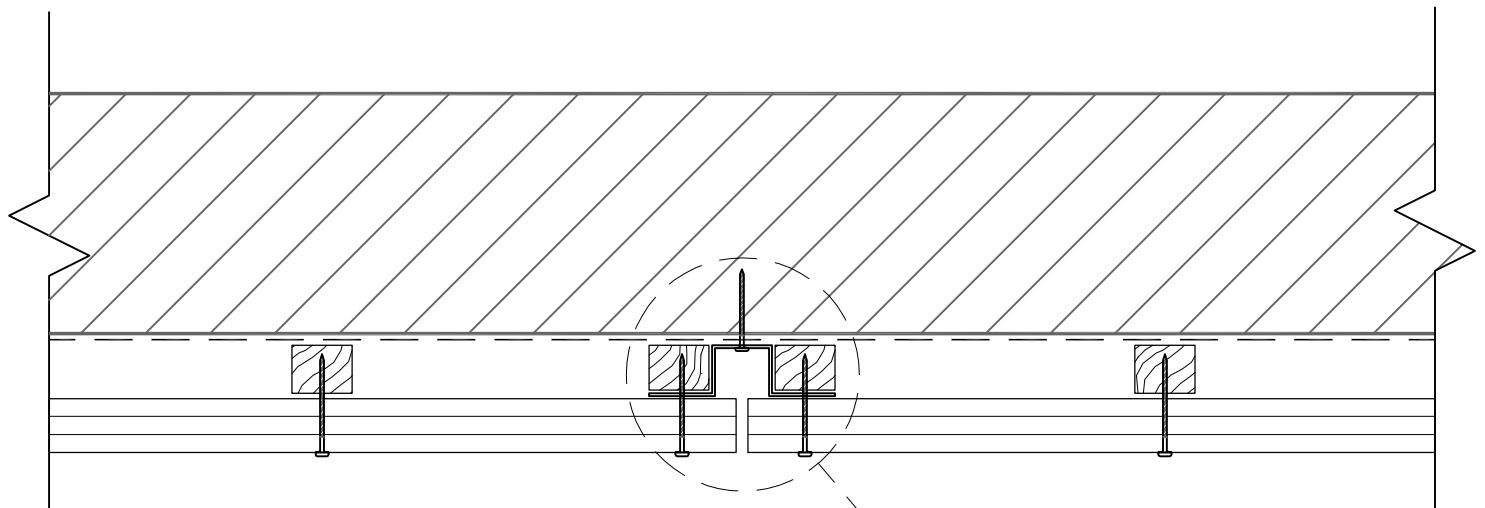


**TYPICAL APPLICATION DETAIL ON
PRESSURE TREATED STRAPPING**

SILVA PANEL

202 - 1730 Coast Meridian Road,
Port Coquitlam BC V3C 3T8, Canada
T: 604.474.1730 F: 604.474.1731





PLAN

SILVA PANEL
TYPICAL APPLICATION DETAIL ON
PRESSURE TREATED STRAPPING

SILVA PANEL
202 - 1730 Coast Meridian Road,
Port Coquitlam BC V3C 3T8, Canada
T: 604.474.1730 F: 604.474.1731

SILVA
Panel™ Canada
www.silvapanel.com